



At General Coach, our commitment to quality is more than just a phrase, it's our mission. Our Recreational Vehicles are developed with pride and a relentless concern for quality, craftsmanship and reliability.

**General Coach: Changing the face of RVing.**

73 Mill Street, Hensall, Ontario N0M 1X0

tel. (519) 262-2600

fax. (519) 262-2340

email. [rfaulkner@tcc.on.ca](mailto:rfaulkner@tcc.on.ca)

website. [www.generalcoach.on.ca](http://www.generalcoach.on.ca)



Choose a lifestyle that's right for you

**Citation Travel Trailers & Fifth Wheels**



**Prestige Park Trailer**



**Citation Resort Park Trailer**



**Huron Ridge Manor, Resort & Estate**



General Coach is a proud supporter of the CRVA's Drive Canadian initiative. The CRVA is an organization that monitors the quality and reliability of recreational vehicles. [www.drivecanadian.com](http://www.drivecanadian.com)



The manufacturer reserves the right to improve or modify the product, which may change specifications, designs or prices. Information contained herein is from data available at time of printing. Photographs and descriptions may contain some standard features and some that are optional extras. Some options may only be available on a pre-production basis. All specifications are approximate. Not all available options are listed. Consult your dealer.



**MANOR, RESORT & ESTATE**





**Huron Ridge** is ideal for those seeking a special place to escape and relax, a place to build memory's with family and friends. Exquisite master-crafted detailing throughout and exceptionally spacious living and dining areas, your **Huron Ridge** offers you the ultimate experience in recreational living. The view inside is just as spectacular as the view outside.



Our most affordable RV the **Huron Ridge Manor** still has the luxury and quality that we build into every RV we manufacture. Add options to make this wonderful space your home.



### M40 1BR DEN



### M40 2BR FL



### M40 3BR CK



Life at its best.



## MANOR FEATURES

### FRAMES & FLOORS

- Heavy Duty 2" x 7" Box Steel Frame Undercarriage w/ Corrosion Control Coating
- Detachable Hitch
- Seamless Reinforced Poly Mesh Underbelly
- 2"x6" Floor Joists on 16" Centers
- 5/8" Tongue & Groove Plywood Flooring – Glued & Screwed
- In Floor Heat Ducting

### SIDEWALLS

- 2"x3" Wall Studding on 16" Centers
- 84" Sidewall Height
- Barricade Exterior Building Wrap
- Horizontal Exterior Vinyl Siding

### ROOF & CEILING

- 3/12 Roof Pitch w/ Vaulted Ceiling Throughout
- Pre-Engineered Roof Trusses on 16" Centers
- 3/8" Roof Sheathing
- 25 Year "Roofmaster" Self Sealing Asphalt Shingles
- 10" Continuous Vented Soffit & Aluminum Fascia
- Okalux Ceiling Panels w/ Vapor Barrier

### PLUMBING

- 10 Gallon Propane Water Heater
- 1.6 Gallon Low Flush Toilet w/ Insulated Tank
- One Piece Fiberglass Tub/Shower Combination
- Double Compartment White Kitchen Sink
- Chrome Two Handle Bath & Kitchen Faucet

### ELECTRICAL & HEATING

- 40,000 BTU Forced Air Propane Furnace w/ In Floor Ducting
- Exterior Coach Light At Patio Door
- Interior & Exterior GFI Plugs
- 7 Circuit 30 Amp Hydro Panel w/ 25' Cord
- Residential Interior Light fixtures Pewter Finish
- Wired & Ducted For Basement Air Conditioning
- Smoke Detector

- Decora Style Receptacles & Light Switches
- 2 TV/Cable Outlets

### WINDOWS & DOORS

- Vertical Aluminum Slider Windows
- Venetian Blinds Throughout
- 30"x76" White Insulated Exterior Door w/ Storm Door
- 60"x76" White Aluminum Single Pane Patio Door
- Window Coverings Throughout

### INSULATION

- Ceilings: R-12 Fiberglass Insulation
- Walls: R-8 Fiberglass Insulation
- Floors: R-12 Fiberglass Insulation

### INTERIOR DÉCOR FINISH

- Brazilian Cherry Cabinet Finish
- Solid Ash Raised Panel Cabinet Doors Throughout
- Roller Glide Out Drawer Hardware
- 24" Electronic Ignition Gas Range
- 16cuft. Two Door Refrigerator
- Kitchen Countertop w/ T-mould Edging
- Kitchen Base Cabinets – No Toe Kick
- Vinyl Flooring in Kitchen & Bath
- Plush Carpet In Living room & Bedrooms
- Mirror Sliding Closet Doors in Master Bedroom – Most Models
- Beige Full Width Sheer At Patio Door
- Built In Medicine Cabinet w/ Mirror
- White Interior Doors w/ Pewter Door Handles
- Flush Mount Cabinet Door Hinges

### OPTIONAL EQUIPMENT

- Queen bed w/ metal headboard & frame
- Night stands in bedroom
- Complete furniture package
- Dinette table w/ four chairs
- Microwave Oven
- Panasonic stereo system
- RV Toilet w/ holding tank
- Central air conditioning unit



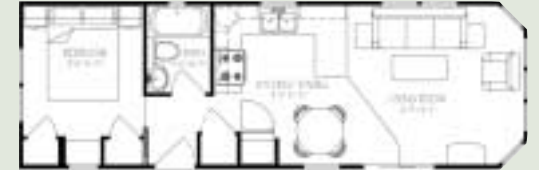
Enjoy spacious living in the elegantly finished three season **Huron Ridge Resort**. If your looking for that final touch you can add a beautiful hardwood floor (optional).



# Huron Ridge

## RESORT FLOOR PLANS

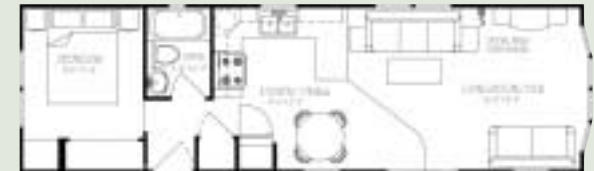
### R36 1BR FL



### R37 1BR FK



### R40 1BR DEN



**R40** 1BR FL



**R40** 2BR FK



**R40** 2BR FL



**R43** 3BR FL



**R39** 1BR DEN



**R39** 2BR FL



**R39** 3BR FL



### FRAMES & FLOORS

- Heavy Duty 2" x 7" Box Steel Frame Undercarriage w/ Corrosion Control Coating
- Detachable Hitch
- Seamless Reinforced Poly Mesh Underbelly
- 2"x6" Floor Joists on 16" Centers
- 5/8" Tongue & Groove Plywood Flooring – Glued & Screwed
- In Floor Heat Ducting

### SIDEWALLS

- 2"x4" Wall Studding on 16" Centers w/ 6mil Vapor Barrier
- 90" Sidewall Height
- Exterior Sheathing
- Barricade Exterior Building Wrap
- Horizontal Exterior Vinyl Siding

### ROOF & CEILING

- 3/12 Roof Pitch w/ Vaulted Ceiling Throughout
- Pre-Engineered Roof Trusses on 16" Centers
- 7/16" Roof Sheathing
- 25 Year "Roofmaster" Self Sealing Asphalt Shingles
- 10" Continuous Vented Soffit & Aluminum Fascia
- Okalux Ceiling Panels w/ Vapor Barrier

### PLUMBING

- 25 Gallon Electric Water Heater w/Bypass
- 1.6 Gallon Low Flush Toilet w/ Insulated Tank
- One Piece Fiberglass Tub/Shower Combination
- White Acrylic Bathroom Vanity Sink
- Double Compartment White Kitchen Sink
- Chrome Two Handle Bath
- Chrome Single Lever Kitchen Faucet

### ELECTRICAL & HEATING

- 40,000 BTU Forced Air Propane Furnace w/ In Floor Ducting
- Exterior Coach Light At Patio Door & Entrance Door
- Interior & Exterior GFI Plugs
- 100 amp Hydro Box w/ 30 amp Service & 25' Cord
- Residential Interior Light fixtures Pewter Finish
- Wired & Ducted For Basement Air Conditioning
- Smoke Detector

- Decora Style Receptacles & Light Switches
- (2) TV/Cable Outlets – Bedroom & Living room
- (1) Ceiling Fan in Living room

### WINDOWS & DOORS

- Vinyl Single Hung Thermopane Windows Throughout
- Venetian Blinds Throughout
- 34"x80" White Insulated Exterior Door w/ Storm Door
- 60"x80" White Aluminum Thermopane Patio Door
- Upgraded Window Coverings Throughout

### INSULATION

- Ceilings: R-20 Fiberglass Insulation
- Walls: R-13 Fiberglass Insulation
- Floors: R-20 Fiberglass Insulation

### INTERIOR DÉCOR FINISH

- Brazilian Cherry Cabinet Finish
- Solid Ash Raised Panel Cabinet Doors Throughout
- Roller Glide Out Drawer Hardware
- 30" Electronic Ignition Gas Range
- 16cuft. Two Door Refrigerator
- Kitchen Countertop w/ Oak Edging
- Toe Kick On All Kitchen Base Cabinets
- Vinyl Flooring in Kitchen & Bath
- Plush Carpet In Living room & Bedrooms
- Mirror Sliding Closet Doors in Master Bedroom – Most Models
- Vertical Blind At Patio Door
- Built In Medicine Cabinet w/ Mirror
- White Interior Doors w/ Pewter Door Handles
- Panasonic Surround Sound System AM/FM/CD/DVD

### OPTIONAL EQUIPMENT

- "Spacemaker" combination microwave
- Central air conditioning unit
- Electric Fireplace (space permitting)
- Day/Night shades in lieu of standard
- Trapezoid windows on front end
- Frost free exterior faucet
- Exterior speakers
- Complete furniture package
- "Style Plus" RV toilet w/ holding tank



Superbly engineered and elegantly crafted the **Huron Ridge Estate** Park Model contains all of the comforts of home with a gorgeous Brazilian cherry wood interior, hardwood raised panel cabinet doors throughout, new crown molding trim and custom drapery by top Canadian decorators.



E40 1BR DEN



E45 1BR DEN



E40 2BR FL



E39 1BR DEN



E42 1BR FK



E39 1BR FL



## E45x24<sup>2</sup>BFK



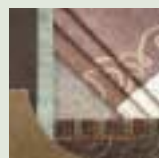
## E45x24<sup>3</sup>BFL



## E45x24<sup>2</sup>BGL



Colour provides a feeling of comfort and is a reflection of your personality. All **Huron Ridge** models offer five custom interior packages to choose from, all designed by Canada's top professional decorators. Be comfortable, be relaxed.



Chocolate Truffle



Midnight Taupe



Auburn Leaves



Whimsical Toffee



Tranquility Blue

### FRAMES & FLOORS

- Heavy Duty 2" x 7" Box Steel Frame Undercarriage w/ Corrosion Control Coating
- Detachable Hitch
- Seamless Reinforced Poly Mesh Underbelly
- 2" x 8" Floor Joists on 16" Centers
- 5/8" Tongue & Groove Plywood Flooring – Glued & Screwed
- In Floor Heat Ducting

### SIDEWALLS

- 2"x6" Wall Studding on 16" Centers w/ 6mil Vapor Barrier
- 90" Sidewall Height
- Exterior Sheathing
- Barricade Exterior Building Wrap
- Horizontal Exterior Vinyl Siding

### ROOF & CEILING

- 3/12 Roof Pitch w/ Vaulted Ceiling Throughout
- Pre-Engineered Roof Trusses on 16" Centers
- 7/16" Roof Sheathing
- Ice & Water Shield At Eaves
- 25 Year Self Sealing Asphalt Shingles
- 10" Continuous Vented Soffit & Aluminum Fascia
- Okalux Ceiling Panels w/ Vapor Barrier

### PLUMING

- 25 Gallon Electric Water Heater w/Bypass
- 1.6 Gallon Low Flush Toilet w/ Insulated Tank
- One Piece Fiberglass Tub/Shower Combination
- White Acrylic Bathroom Vanity Sink
- Double Compartment White Kitchen Sink
- Chrome Single Lever Bathroom Faucet
- Chrome Single Lever Kitchen Faucet

### ELECTRICAL & HEATING

- 56,000 BTU Forced Air Propane Furnace w/ In Floor Ducting
- Exterior Coach Light At Patio Door & Entrance Door
- Interior & Exterior GFI Plugs

- 100 amp Hydro Box w/ 30 amp Service & 25' Cord
- Residential Interior Light fixtures Pewter Finish
- Complete Basement Air Conditioning Package
- Smoke Detector
- Decora Style Receptacles & Light Switches
- (2) TV/Cable Outlets – Bedroom & Living room
- (2) Ceiling Fan in Living room

### WINDOWS & DOORS

- Deluxe Vinyl Double Hung Thermo pane Windows w/ Grills
- Expandable Insulating Foam Around All Windows & Doors
- Venetian Blinds Throughout
- 34"x80" White Insulated Exterior Door w/ Storm Door
- 60"x80" White Vinyl Thermo pane Patio Door
- Upgraded Window Coverings Throughout

### INSULATION

- Ceilings: R-26 Fiberglass Insulation
- Walls: R-20 Fiberglass Insulation
- Floors: R-26 Fiberglass Insulation

### INTERIOR DÉCOR FINISH

- Brazilian Cherry Cabinet Finish
- Solid Ash Raised Panel Cabinet Doors Throughout
- Crown Moulding Over All Kitchen Cabinets
- Roller Glide Out Drawer Hardware
- 30" Electronic Ignition Gas Range
- 19.6cuft. Two Door Refrigerator
- 30" "Spacemaker" Combination Microwave
- Residential Roll Top Kitchen Countertop
- Vinyl Flooring in Kitchen & Bath
- Plush Carpet In Living room & Bedrooms
- Mirror Sliding Closet Doors in Master Bedroom – Most Models
- Vertical Blind At Patio Door
- Built In Medicine Cabinet w/ Mirror
- White Interior Doors w/ Pewter Door Handles

### OPTIONAL EQUIPMENT AVAILABLE